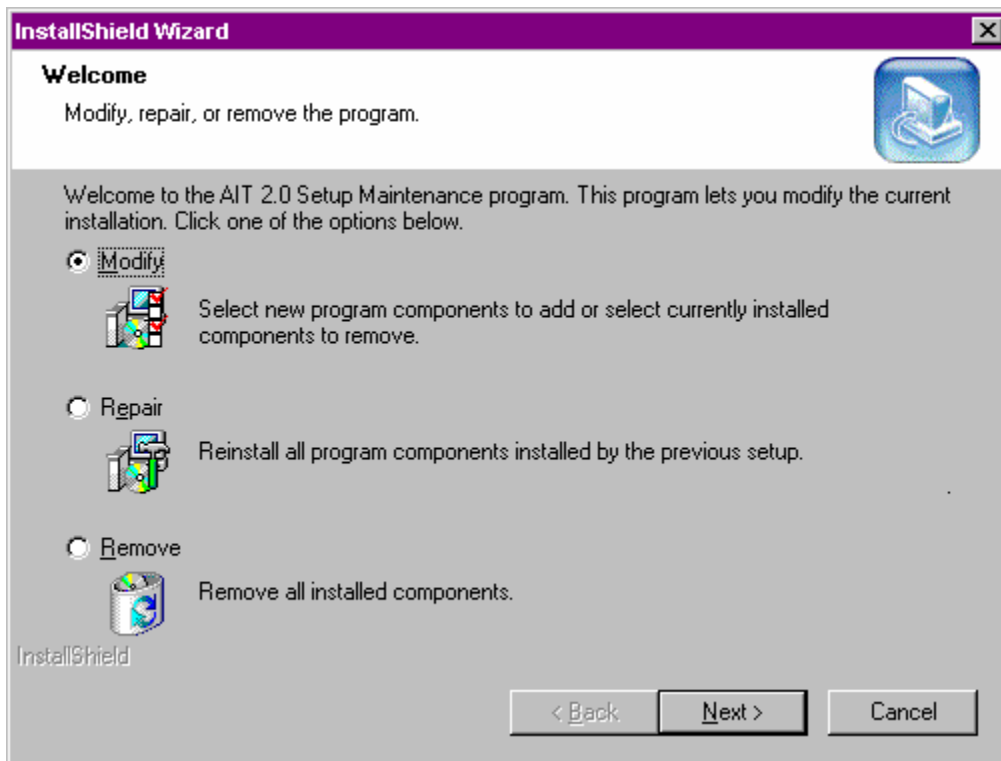
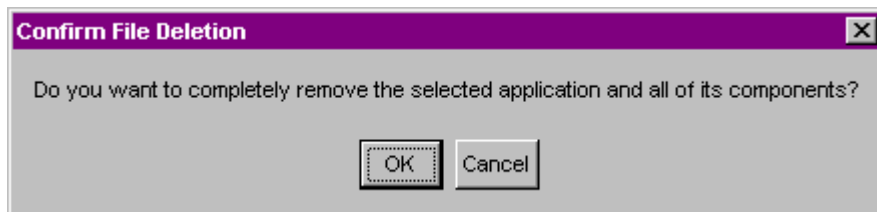


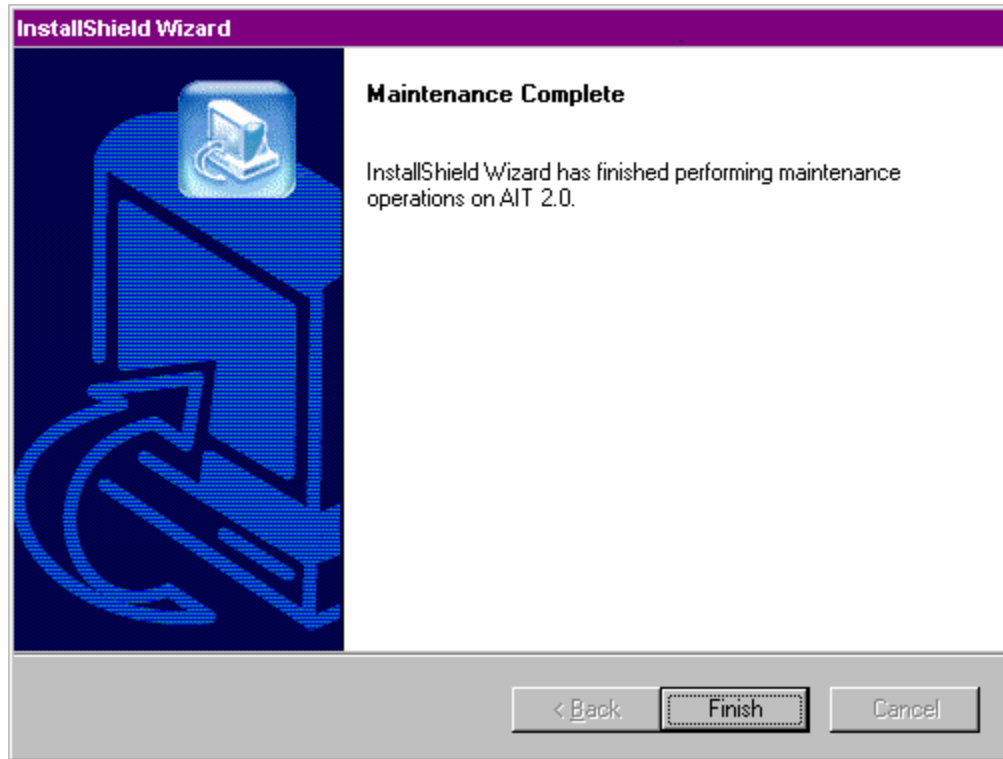
- Locate the AIT install CD.
- Quit all running Application.
- Login as Administrator
- Backup the current AIT configuration using the Backup/Restore utility. (See AIT User Manual)
- Insert AIT CD into the CD drive.
- With the mouse click on the “Start” using the right mouse button. When the window opens click on the “Explore”. Use the explorer window to locate the “AIT 2.0\ AIT 2.0.exe” file on the CD.
- Double click on “AIT 2.0.exe” file to launch the AIT install.
(See AIT USER MANUAL)



- At the “Welcome” window select the “Remove” then click on “Next”.



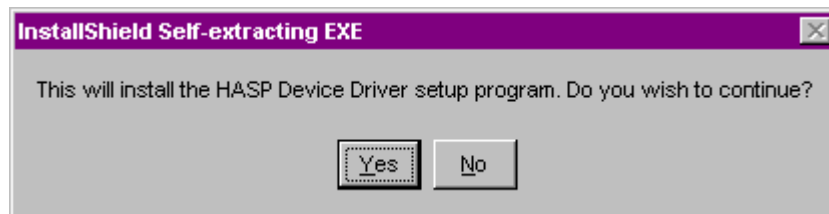
- Click on “OK”



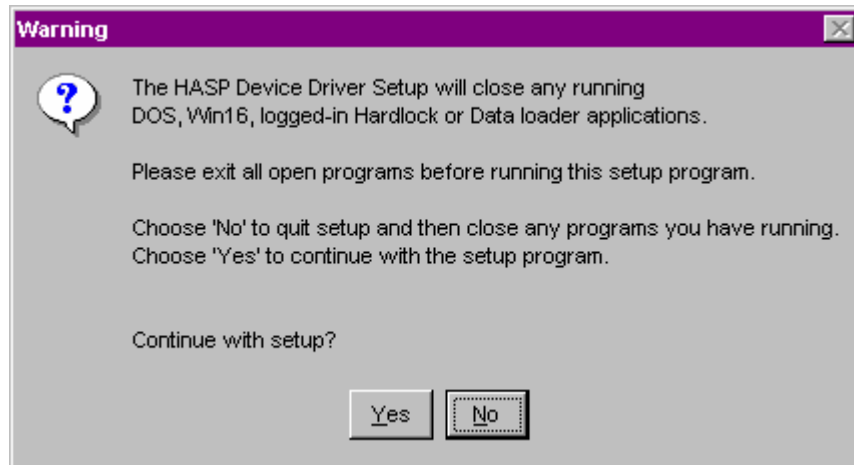
- Clicks on “Finish” to complete the automatic uninstall.

Removing the Dongle Driver

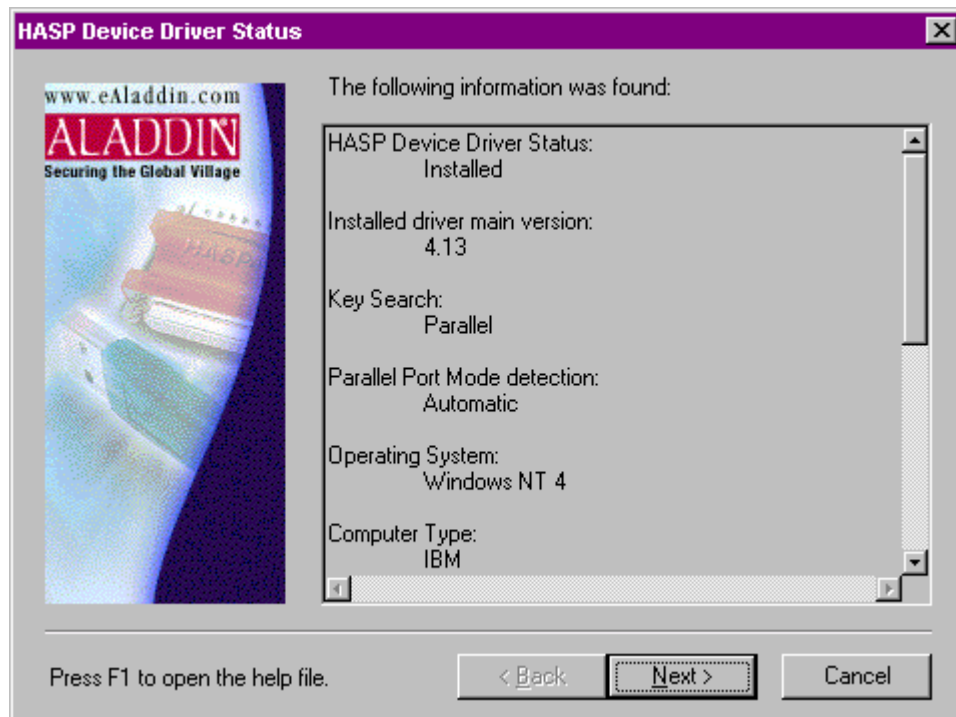
- With the mouse click on the “Start” using the right mouse button. When the window opens click on the “Explore”. Use the explorer window to locate the “Hasp_Driver\hdd32.exe” file on the CD.
- Double click on “hdd32.exe” file to launch the AIT install.



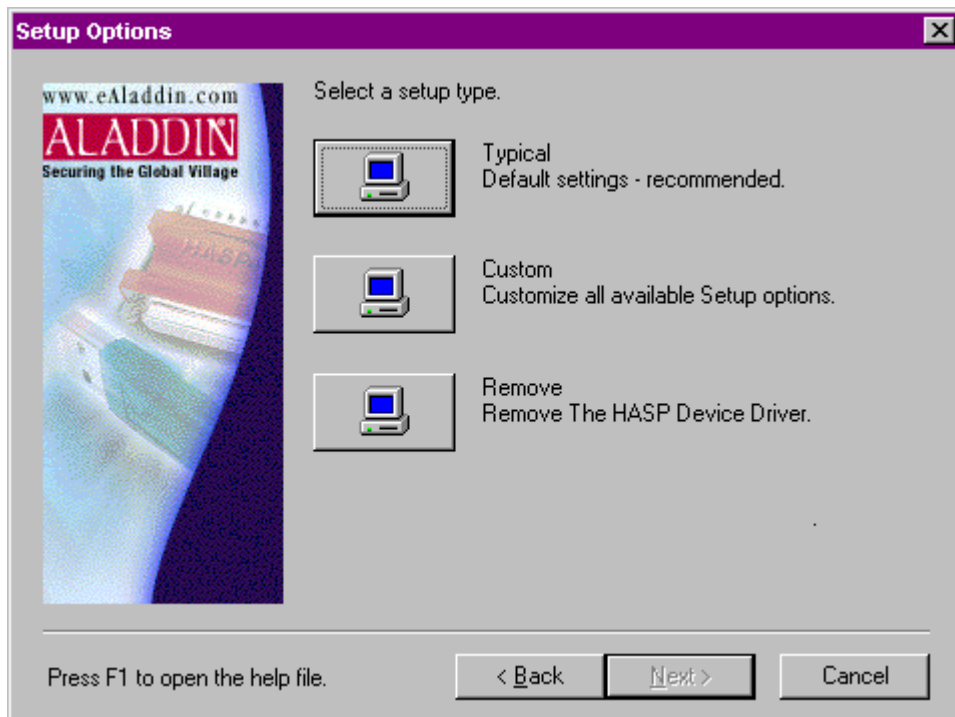
- Click on “Yes” to continue.



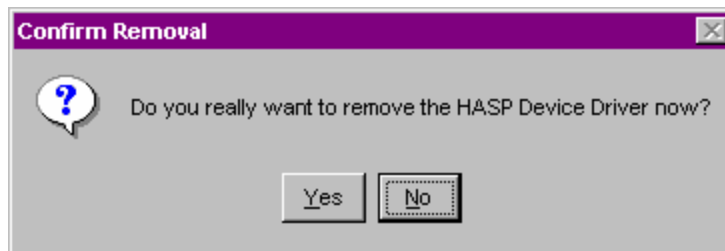
- Click on “Yes” to continue.



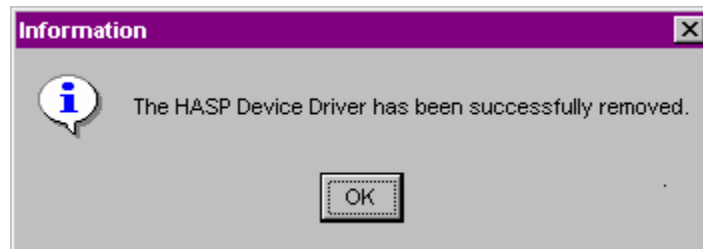
- Click on “Next” to continue.



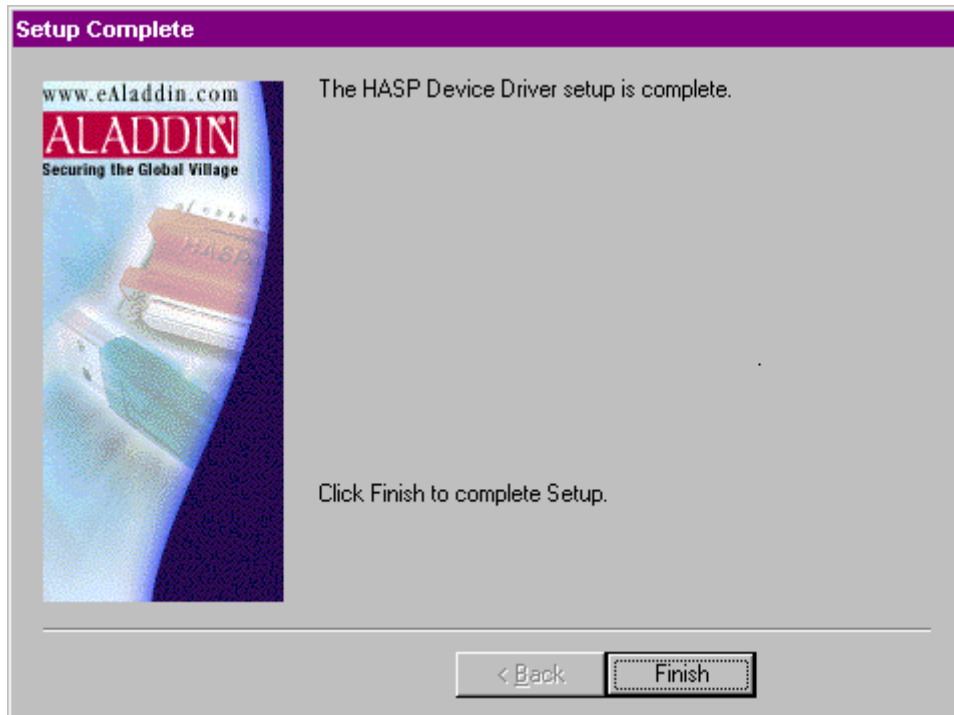
- Click on the “Remove” to continue.



- Click “Yes” to continue.



- Click “OK” to continue.



- Click “Finish” to continue; now the Hasp Device Driver is completely removed.

REMOVING ALL AIT RESIDUAL FILES

- With the mouse click on the “Start” using the right mouse button. When the window opens click on the “Explore”. Use the explorer window to locate the “AIT” folder. The “AIT” Folder should be in one of two places “C:\Program Files\AIT (on Approval Host PC) or “C:\AIT” (on Separate PC). Select the “AIT” folder then delete it.
- Explore to the “C:\Winnt” folder and delete the following files:

APPROVAL Host PC installation:

~PviewerCTLConfig.ini
 AIT.INI
 FolderLog.txt
 Psik.ini
 PsikErrors.ini
 PsikErrorsE.ini
 PviewerCTLConfig.ini

Separate PC Installation: All the above files plus these two.

PengineTest.ini
 PengineTilingResults.ini

Restoring AIT Configuration and Setup after installing AIT on a different PC.

- The Backup/Restore utility can be used to restore the previous Backup from other PC.
- You will need to consider the following previous Configuration and Setup.

1. Map a Network Drive if the previous Setup had them.

Note: The Backup/Restore utilities will error when restoring a previous Setup with Mapped Network Drive if the drive is not mapped. The same drive letter needs to be used when mapping the network drive. The drive letter can be obtained from “Mapped Drive List.txt” file found in the AIT backup folder. Remember that not all the Network Drives in the file are Network Drives.

2. The Device Setup Wizard will need to be changed after restoring the previous Backup.

Note: If the AIT was moved from APPROVAL Host PC to a Separate PC the IP Address of the APPROVAL Host is needed for the Device Setup Wizard. When the AIT is move from Separate PC to the APPROVAL Host PC the Device Setup Wizard would be configured for “Locally on the Approval XP Host” which uses the Local Host IP Address. The Local Host IP Address is configured automatically so no operator intervention is required.

3. If all else fails the **individual files** in the following folders can be manually copied from the AIT backup folders to the AIT install folders.

DonorMapping
LaydownOrder
Tables
Templates

Note: The Setup and Configuration will need to be done manually. Refer to the USER AIT User Manual.

Do not copy folders over the top of the installed folder this will render the AIT inoperative