

## AIT 2.5 Nexus Multi Screening Addendum

### Nexus Multi screening

Nexus can be set up to use the application screening. By doing that separations can have multiple line screens, angles or dot shapes depending on the application that built the files ( eg Artpro ).

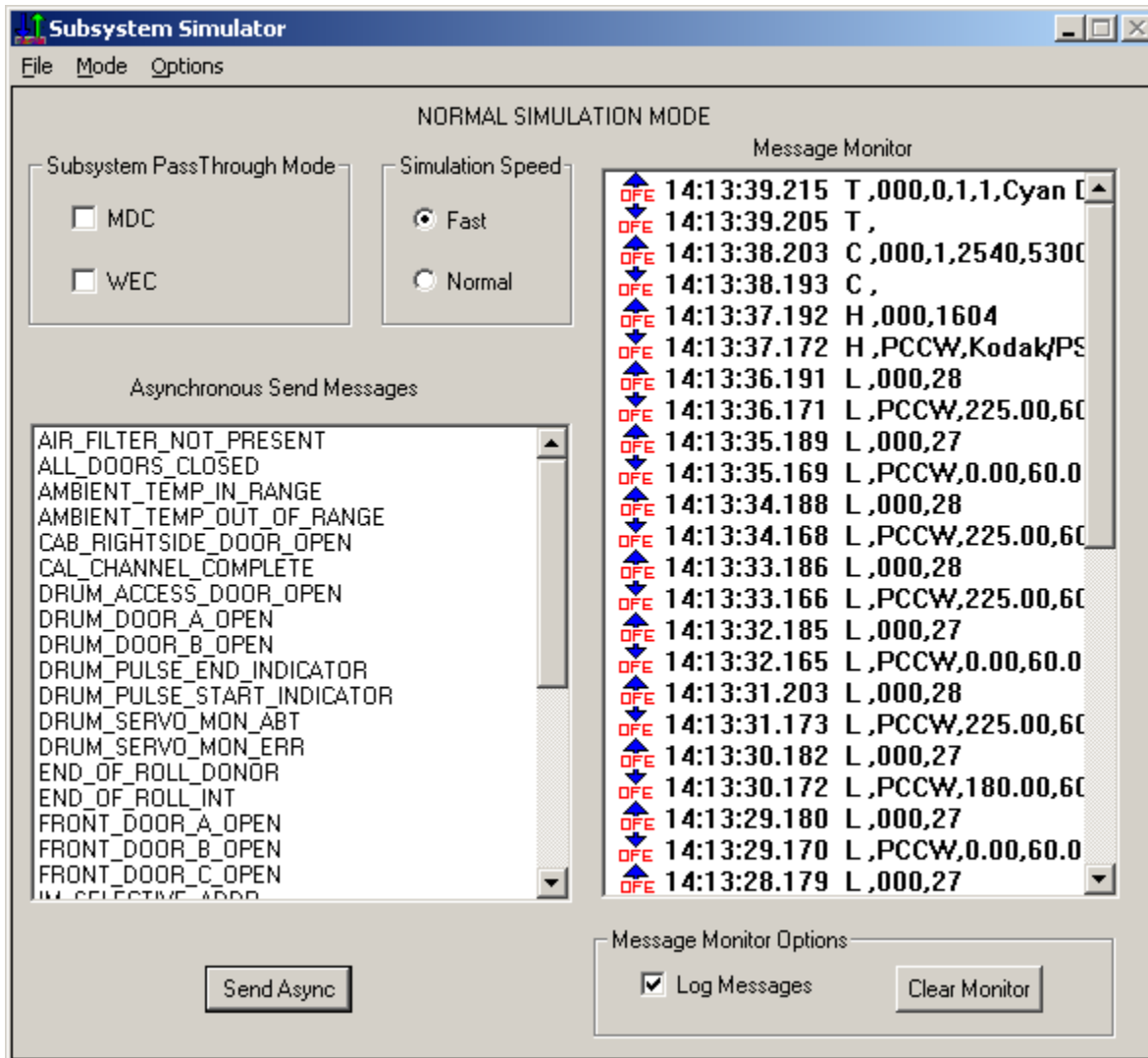
The Nexus rip puts screening comments in the DCS2 files it builds for the Kodak Approval workflow.

In case a separation has multiple screens in it, there will be multiple comments in the DCS2 file.

AIT will then check the lasertable to see if there are any conflicts.

To do so it uses the L OFE command which can be seen in the subsystem simulator.( part of the host software )

The host replies with the number of lasers needed.



## AIT 2.5 Nexus Multi Screening Addendum

---

If there is no conflict AIT will use one of the line screen/angle sets to be sent to the host.

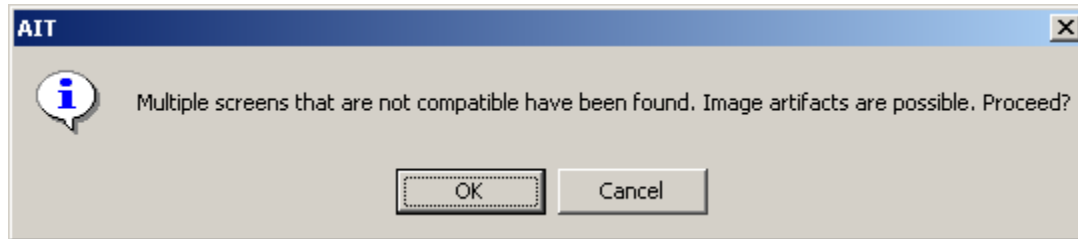
In case of a conflict AIT's behaviour can be set.

In File/preferences a flag called Show Multi-screen warning can be set ( default is on )

If set AIT will show a warning indicating there is a conflict.

If the user selects OK the proof will be sent.

If the user selects Cancel the proof will be cancelled.



If the flag is not set AIT will just continue and send the line screen/angle combination to the host that uses the least amount of lasers.

Things to remember:

If the LPI is smaller than 55 or bigger than 600 LPI it will be set to 60.( default for stochastic or FM screening )

Regardless of the message being displayed or not, a log file shall be build containing a data/time stamp and file name for those mixed screen jobs which have a laser table mismatch.

For those mixed screening jobs that do NOT have a laser table conflict, NO record shall be recorded in the mixed screening conflict log file.

This log can be found in : C:\winnt\AITMultiScreenLog.txt

It will allow in case of artifacts to check whether this job had conflicts.