

Kodak Polychrome Graphics ImageMapper (beta)

Quick Start Guide

This Quick Start takes you through the steps for installing KPG ImageMapper software, creating a new profile for your digital camera, and using that profile to process a batch of pictures to a destination color space. If you need additional detail and help, consult the KPG ImageMapper User's Guide, included with the ImageMapper software in Adobe Acrobat PDF format.

Install the Software

To install KPG ImageMapper v1.0 Beta, insert the CD in the CD drive and double-click the KPG ImageMapper installer icon. The software default installation location is a folder named **KPG ImageMapper** in the Mac OSX **Applications** directory.

The installer will check for the correct version of Mac OSX and will not install on a version of Mac OSX earlier than v10.3.0. A message will be displayed indicating the installation will not proceed.

Mac OSX installation requires a user account with administrator privileges.

For Beta software users only: If performing a re-installation, it is recommended that you empty the Trash after the application is installed to ensure that the previous version is removed from the system.

Your software was shipped with the latest available version of the KPG Color Fidelity Module (CFM). From time to time this module is updated, and newer versions may be available on the KPG TAG web site. Please click on the following link to check for newer versions of the KPG CFM:

<http://tag.kpgraphics.com/color/imagemapper>

Shoot Pictures

Shoot a batch of pictures, making sure to include the 24-patch GRETAGMACBETH ColorChecker target (or the new Mini ColorChecker) in one of your shots, photographed with the same setup, lighting and exposure as the other photos you wish to process. Note that the ColorChecker need not be perfectly square and level in your picture. Make sure that the picture is well-exposed; the white patch in the GRETAGMACBETH ColorChecker should not be greater than 252 counts in RGB.

Create a New Profile and Process Pictures

1. Launch ImageMapper and check or adjust the Preferences, if necessary. In particular, check that the **Default input** pop-up menu in the Preferences reflects the type of color your camera produces natively, such as sRGB or (in some cases) Adobe RGB (1998). Click **OK**.

2. Select **File > New Camera Profile...**

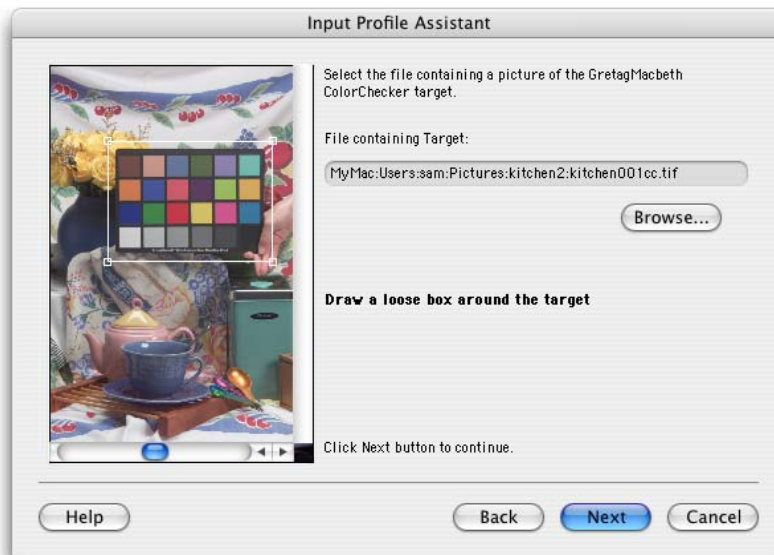


3. The Input Profile Assistant will display a Welcome screen.



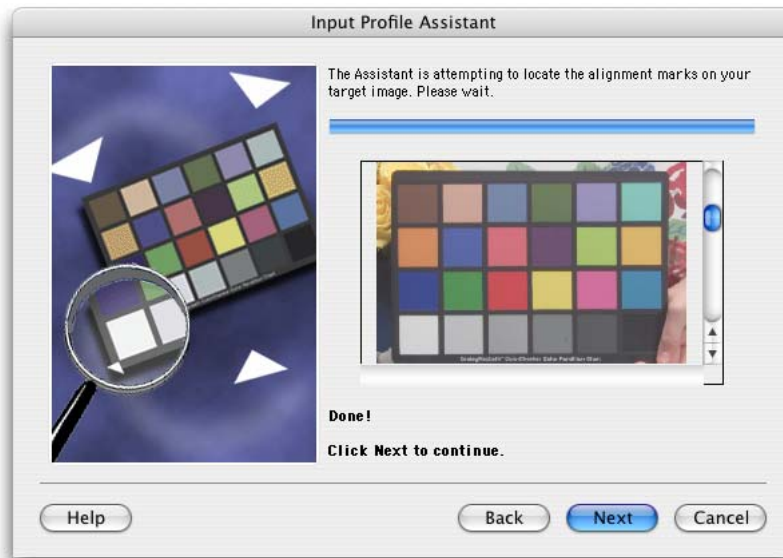
Click **Next**.

4. On the next screen, click **Browse...**, and navigate to the folder of pictures you shot, which should also include a shot containing the ColorChecker target. Select the picture with the ColorChecker.



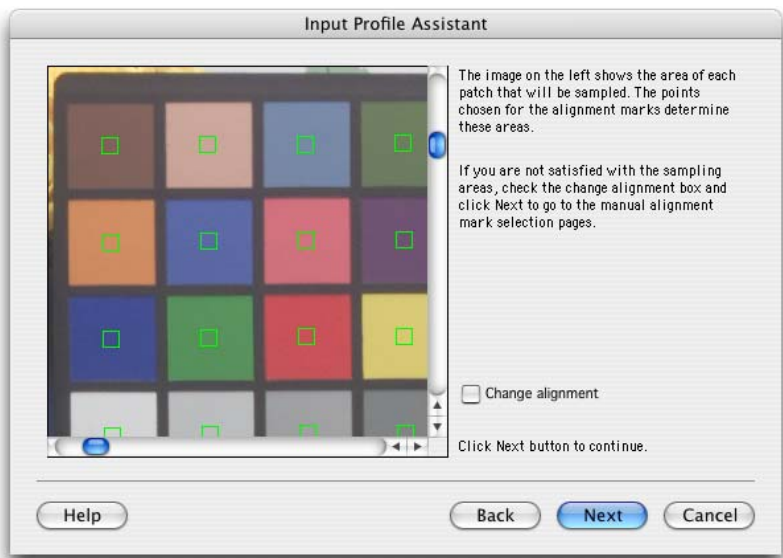
Draw a loose box (marquee) around the target. Click **Next**.

5. The Input Profile Assistant will automatically locate the target and the patches that it uses to calculate the new input profile.



Click **Next**.

6. The green boxes on this screen show the location of the points for sampling the target patches.



Click **Next**.

7. The Input Profile Assistant displays a progress bar as it calculates the new profile.



Click **Next**.

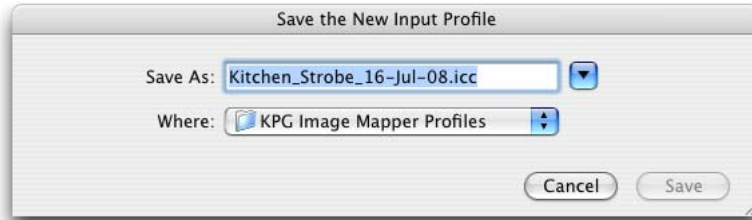
8. On the final screen the Assistant will show you what the picture will look like with the new profile applied. Enter a meaningful description for your profile in the **New profile description** field (or accept the default description that ImageMapper provides).



To save the profile to disk, make sure the **Save profile to disk** option is checked. To also apply the profile to a batch of pictures, check the box labeled **Process the other pictures in the input folder to:**, and make sure the correct destination profile is selected in the pop-up menu.

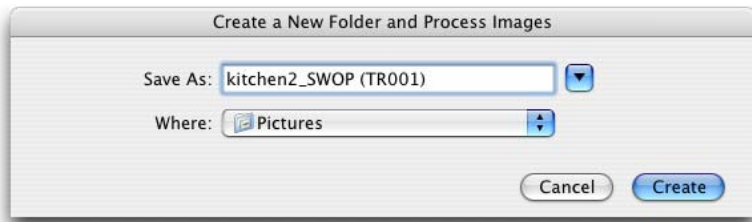
9. Click **Finish**.

10. In the **Save the New Profile** dialog box, enter a name and location for storing for the new profile.



Click **Save**.

11. In the **Create a New Folder and Process Images** dialog box, enter a name and location for the folder that will contain your processed pictures.



A progress bar will appear, indicating that your pictures are being processed.